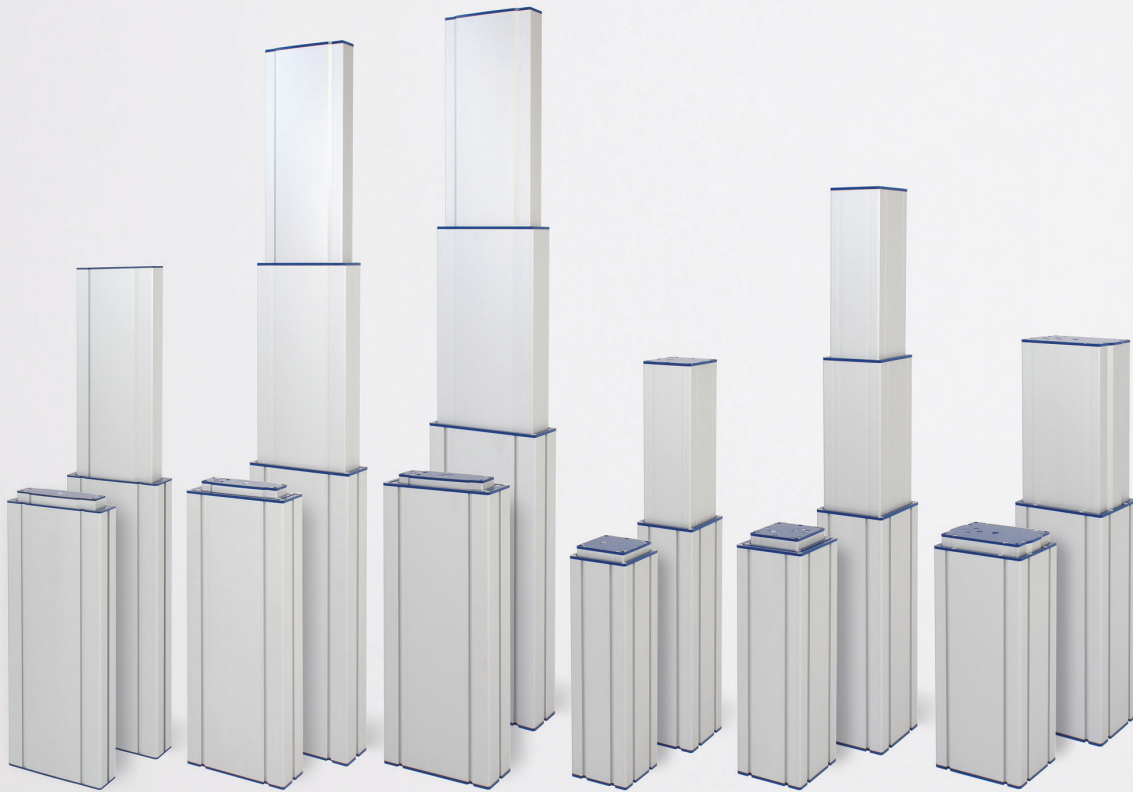




Low-Noise



Option:



Electric Aluminium Lifting Columns

Quality, Stability, Flexibility and Plug & Play!
Load Capacity up to 10000 N (1000 kg).

MOVETEC



True Innovative Moving Technology

**Load capacity:
Max. 3500N**



MAC2

Type: 2-part electric lifting column
Max. load: Up to 3500N (350 kg)
Stroke length: 100-600 (1000) mm
Speed: Up to 50 mm/s
Min. installation height: 222 mm
Outer profile size: 210x64.7 mm
Inner profile size: 174.5x53.7 mm

**Load capacity:
Max. 1750N**



MAC4

Type: 3-part electric lifting column
Max. load: Up to 1750N (175 kg)
Stroke length: 400-1200 mm
Speed: Up to 100 mm/s
Min. installation height: 344 mm
Outer profile size: 222x79 mm
Inner profile size: 173x54 mm

**Load capacity:
Max. 3500N**



MAC5

Type: 3-part electric lifting column
Max. load: Up to 3500N (350 kg)
Stroke length: 400-1200 mm
Speed: Up to 100 mm/s
Min. installation height: 344 mm
Outer profile size: 240x87 mm
Inner profile size: 191x61 mm

**Load capacity:
Max. 6000N**



MAC7

Type: 2-part electric lifting column
Max. load: Up to 6000N (600 kg)
Stroke length: 100-600 (1000) mm
Speed: Up to 50 mm/s
Min. installation height: 222 mm
Outer profile size: 125x125 mm
Inner profile size: 106x106 mm

**Load capacity:
Max. 6000N**



MAC10

Type: 2-part electric lifting column
Max. load: Up to 6000N (600 kg)
Stroke length: 100-600 (1000) mm
Speed: Up to 50 mm/s
Min. installation height: 222 mm
Outer profile size: 222x79 mm
Inner profile size: 197x61/64 mm

**Load capacity:
Max. 6000N**



MAC11

Type: 2-part electric lifting column
Max. load: Up to 6000N (600 kg)
Stroke length: 100-600 (1000) mm
Speed: Up to 50 mm/s
Min. installation height: 222 mm
Outer profile size: 125x125 mm
Inner profile size: 106x106 mm

**Load capacity:
Max. 3500N**



MAC2U

Type: 2-part electric lifting column
Max. load: Up to 3500N (350 kg)
Stroke length: 100-600 (1000) mm
Speed: Up to 50 mm/s
Min. installation height: 222 mm
Outer profile size: 210x64.7 mm
Inner profile size: 174.5x53.7 mm

**Load capacity:
Max. 1750N**



MAC4U

Type: 3-part electric lifting column
Max. load: Up to 1750N (175 kg)
Stroke length: 400-1200 mm
Speed: Up to 100 mm/s
Min. installation height: 344 mm
Outer profile size: 222x79 mm
Inner profile size: 173x54 mm

**Load capacity:
Max. 3500N**



MAC5U

Type: 3-part electric lifting column
Max. load: Up to 3500N (350 kg)
Stroke length: 400-1200 mm
Speed: Up to 100 mm/s
Min. installation height: 344 mm
Outer profile size: 240x87 mm
Inner profile size: 191x61 mm

**Load capacity:
Max. 6000N**



MAC7U

Type: 2-part electric lifting column
Max. load: Up to 6000N (600 kg)
Stroke length: 100-600 (1000) mm
Speed: Up to 50 mm/s
Min. installation height: 222 mm
Outer profile size: 125x125 mm
Inner profile size: 106x106 mm

**Load capacity:
Max. 6000N**



MAC10U

Type: 2-part electric lifting column
Max. load: Up to 6000N (600 kg)
Stroke length: 100-600 (1000) mm
Speed: Up to 50 mm/s
Min. installation height: 222 mm
Outer profile size: 222x79 mm
Inner profile size: 197x61/64 mm

**Load capacity:
Max. 6000N**



MAC11U

Type: 2-part electric lifting column
Max. load: Up to 6000N (600 kg)
Stroke length: 100-600 (1000) mm
Speed: Up to 50 mm/s
Min. installation height: 222 mm
Outer profile size: 125x125 mm
Inner profile size: 106x106 mm



Aluminium Lifting Columns

Option: Columns can be supplied with a small Bluetooth® remote control or controlled via an iPhone/Android device.



**Load capacity:
Max. 3500N**

Low-Noise



MAC12
Type: 3-part electric lifting column
Max. load: Up to 3500N (350kg)
Stroke length: 200-1200mm
Speed: Up to 100mm/s
Min. installation height: 249mm
Outer profile size: 144 x 144mm
Inner profile size: 106 x 106mm

**Load capacity:
Max. 10000N**

Low-Noise

**HEAVY-DUTY
10000N**



MAC14
Type: 2-part electric lifting column
Max. load: Up to 10000N (1000kg)
Stroke length: 100-600 (1000)mm
Speed: Up to 50mm/s
Min. installation height: 222mm
Outer profile size: 194 x 148mm
Inner profile size: 182 x 126mm

**Load capacity:
Max. 6000N**

Low-Noise




MAC15
Type: 2-part electric lifting column
Max. load: Up to 6000N (600kg)
Stroke length: 100-600 (1000)mm
Speed: Up to 50mm/s
Min. installation height: 222mm
Outer profile size: 144 x 144mm
Inner profile size: 125 x 125mm

**Load capacity:
Max. 3500N**

Low-Noise

**2022
NEW**



MAC16
Type: 2-part electric lifting column
Max. load: Up to 3500N (350kg)
Stroke length: 100-600 (1000)mm
Speed: Up to 50mm/s
Min. installation height: 222mm
Outer profile size: 197,9 x 64,4mm
Inner profile size: 172,9 x 53,8mm

**Load capacity:
Max. 6000N**

Low-Noise

**2022
NEW**



MAC17
Type: 2-part electric lifting column
Max. load: Up to 6000N (600kg)
Stroke length: 100-600 (1000)mm
Speed: Up to 50mm/s
Min. installation height: 222mm
Outer profile size: 215,9 x 71,4mm
Inner profile size: 190,9 x 61mm

**Load capacity:
Max. 6000N**

Low-Noise



MAC18
Type: 2-part electric lifting column
Max. load: Up to 6000N (600kg)
Stroke length: 100-600 (1000)mm
Speed: Up to 50mm/s
Min. installation height: 222mm
Outer profile size: 240 x 87mm
Inner profile size: 215 x 70mm

**Load capacity:
Max. 3500N**

Low-Noise



MAC12U
Type: 3-part electric lifting column
Max. load: Up to 3500N (350kg)
Stroke length: 200-1200mm
Speed: Up to 100mm/s
Min. installation height: 249mm
Outer profile size: 144 x 144mm
Inner profile size: 106 x 106mm

**Load capacity:
Max. 10000N**

Low-Noise

**HEAVY-DUTY
10000N**



MAC14U
Type: 2-part electric lifting column
Max. load: Up to 10000N (1000kg)
Stroke length: 100-600 (1000)mm
Speed: Up to 50mm/s
Min. installation height: 222mm
Outer profile size: 194 x 148mm
Inner profile size: 182 x 126mm

**Load capacity:
Max. 6000N**

Low-Noise



MAC15U
Type: 2-part electric lifting column
Max. load: Up to 6000N (600kg)
Stroke length: 100-600 (1000)mm
Speed: Up to 50mm/s
Min. installation height: 222mm
Outer profile size: 144 x 144mm
Inner profile size: 125 x 125mm

**Load capacity:
Max. 3500N**

Low-Noise

**2022
NEW**



MAC16U
Type: 2-part electric lifting column
Max. load: Up to 3500N (350kg)
Stroke length: 100-600 (1000)mm
Speed: Up to 50mm/s
Min. installation height: 222mm
Outer profile size: 197,9 x 64,4mm
Inner profile size: 172,9 x 53,8mm

**Load capacity:
Max. 6000N**

Low-Noise

**2022
NEW**



MAC17U
Type: 2-part electric lifting column
Max. load: Up to 6000N (600kg)
Stroke length: 100-600 (1000)mm
Speed: Up to 50mm/s
Min. installation height: 222mm
Outer profile size: 215,9 x 71,4mm
Inner profile size: 190,9 x 61mm

**Load capacity:
Max. 6000N**

Low-Noise



MAC18U
Type: 2-part electric lifting column
Max. load: Up to 6000N (600kg)
Stroke length: 100-600 (1000)mm
Speed: Up to 50mm/s
Min. installation height: 222mm
Outer profile size: 240 x 87mm
Inner profile size: 215 x 70mm



True Innovative Moving Technology

Load capacity:
Max. 3500N



Low-Noise

2022
NEW



MAC21

Type: 2-part electric lifting column
Max. load: Up to 3500N (350kg)
Stroke length: 100-600 (1000)mm
Speed: Up to 50 mm/s
Min. installation height: 222 mm
Outer profile size: 115 x 76 mm
Inner profile size: 98 x 58 mm

Load capacity:
Max. 6000N



Low-Noise

2022
NEW



MAC30

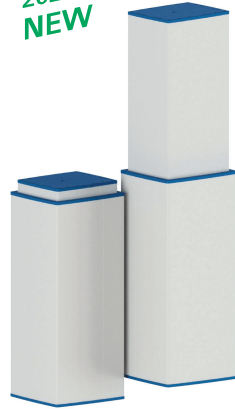
Type: 3-part electric lifting column
Max. load: Up to 6000 (600kg)
Stroke length: 300-900 (1200) mm
Speed: Up to 100 mm/s
Min. installation height: 344 mm
Outer profile size: 180 x 160 mm
Inner profile size: 136,7 x 116,7 mm

Load capacity:
Max. 6000N



Low-Noise

2022
NEW



MAC31

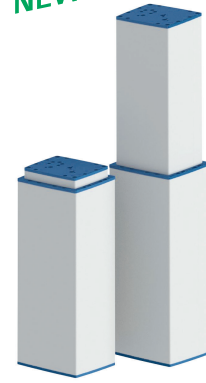
Type: 2-part electric lifting column
Max. load: Up to 6000 (600kg)
Stroke length: 100-600 (1000) mm
Speed: Up to 100 mm/s
Min. installation height: 222 mm
Outer profile size: 180 x 160 mm
Inner profile size: 157,7 x 137,7 mm

Load capacity:
Max. 6000N



Low-Noise

2022
NEW



MAC32

Type: 2-part electric lifting column
Max. load: Up to 6000 (600kg)
Stroke length: 100-600 (1000) mm
Speed: Up to 100 mm/s
Min. installation height: 222 mm
Outer profile size: 157,7 x 137,7 mm
Inner profile size: 136,7 x 116,7 mm

About Movetec



The danish company Movetec Solutions ApS offers very versatile lifting columns and linear actuator systems. Movetec employs a highly professional team of engineers who have a wealth of experience of linear actuator technologies. Our team develops lifting columns and actuator systems. At Movetec, we assist and guide our clients so that they get the best and most cost-effective solution. Our systems are produced at our factory in Middelfart (Denmark) and adapted, assembled and tested at our workshops and then shipped to dealers and end users across the globe. Movetec stocks lifting columns, actuators, control panels and control units and accessories at the warehouse in Middelfart. Movetec's aluminium profiles are produced in Denmark. Movetec's customers can rest assured of high standards of service - from before they place their order and after the products have been delivered! If you wish, we are more than willing to visit you and your company to review your project with you in detail and arrive at the absolute best possible solution. Welcome to Movetec!

Load capacity:
Max. 3500N



Low-Noise

2022
NEW



MAC21U

Type: 2-part electric lifting column
Max. load: Up to 3500N (350kg)
Stroke length: 100-600 (1000)mm
Speed: Up to 50 mm/s
Min. installation height: 222 mm
Outer profile size: 115 x 76 mm
Inner profile size: 98 x 58 mm

Load capacity:
Max. 6000N



Low-Noise

2022
NEW



MAC30U

Type: 3-part electric lifting column
Max. load: Up to 6000 (600kg)
Stroke length: 300-900 (1200) mm
Speed: Up to 100 mm/s
Min. installation height: 344 mm
Outer profile size: 180 x 160 mm
Inner profile size: 136,7 x 116,7 mm

Load capacity:
Max. 6000N



Low-Noise

2022
NEW



MAC31U

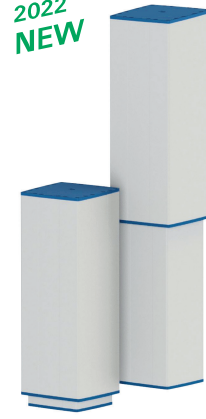
Type: 2-part electric lifting column
Max. load: Up to 6000 (600kg)
Stroke length: 100-600 (1000) mm
Speed: Up to 100 mm/s
Min. installation height: 222 mm
Outer profile size: 180 x 160 mm
Inner profile size: 157,7 x 137,7 mm

Load capacity:
Max. 6000N



Low-Noise

2022
NEW



MAC32U

Type: 2-part electric lifting column
Max. load: Up to 6000 (600kg)
Stroke length: 100-600 (1000) mm
Speed: Up to 100 mm/s
Min. installation height: 222 mm
Outer profile size: 157,7 x 137,7 mm
Inner profile size: 136,7 x 116,7 mm

Movetec Lifting Columns and Actuators

You will have seen the system at work in height-adjustable desks in offices. In principle, a lifting column works like a telescopic antenna. A lifting column is a high-tech electrical column that, when installed with an electric motor inside, can either raise and lower or pull and push to the side. Movetec has developed a broad range of high-quality aluminium lifting column solutions. We deliver lifting columns individually, in pairs and in systems comprised of up to 24 lifting columns, which can adjust e.g. a complete conveyor belt or packing station. Lifting columns help to make workspaces that are ergonomically correct. Lifting columns are used not only in office environments. They are also widely applied in industry, laboratories, food and medicinal production, and in the primary healthcare, hospital and many other sectors, where they help to relieve the strain of heavy lifting and give users an opportunity to adjust their workplace precisely to fit. Movetec develops lifting columns in-house. We have recently launched a new type of column, comprised of three parts/elements (there are usually two). The new columns facilitates a lower minimum build-in length in combination with a much higher maximum stroke length.

Lifting columns are often component parts of the base or skeleton of work stations and larger workspace solutions. To offer as broad a range of lifting columns as possible, Movetec produces square, rectangular/flat and round designs. All the Movetec lifting columns can be tailor-made, i.e. engineered with customised stroke lengths within specified minimum and maximum stroke lengths, and at a customised speed and installation height. Movetec lifting columns can be controlled using up/down buttons or a foot pedal. We also supply more advanced solutions with a control panel with display that can be coded to operate with multiple pre-set heights and programs. You can also opt for a wireless remote control solution that either uses a small Bluetooth® control unit or is paired with an iPhone®/Android® device that functions as a control unit.



MOVETEC

Tel. +45 64 89 28 05 • www.movetec.dk



True Innovative Moving Technology

Bluetooth® is a registered trademark and are the property of the owner Bluetooth SIG, Inc. Android™ Google Play™ is registered trademarks and are the property of the owner Google Inc. Apple® App Store™ is registered trademarks and are the property of the owner Apple Inc. Other trademarks and trade names are the property of their respective owners.